

X86 GPIO Testing Guidance

1. Install the Intel GPIO Configuration software;

Application	2017-08-01 15:43	文件夹	
BinData	2017-08-01 15:43	文件夹	
Drivers	2017-08-01 15:43	文件夹	
GPIODocuments	2017-08-01 15:44	文件夹	
Share	2017-08-01 15:44	文件夹	
UEFI	2017-08-01 15:44	文件夹	
XMLTemplates	2017-08-01 15:44	文件夹	
IIF2.ini	2016-03-15 5:23	配置设置	12 KB
Intel.ico	2016-03-15 5:23	图标	51 KB
Setup.exe	2016-03-15 5:23	应用程序	1,543 KB

Application	2017-08-01 15:43	文件夹	
BinData	2017-08-01 15:43	文件夹	
Drivers	2017-08-01 15:43	文件夹	
GPIODocuments	2017-08-01 15:44	文件夹	
Share	2017-08-01 15:44	文件夹	
UEFI	2017-08-01 15:44	文件夹	
XMLTemplates	2017-08-01 15:44	文件夹	
IIF2.ini	2016-03-15 5:23	配置设置	12 KB
Intel.ico	2016-03-15 5:23	图标	51 KB
Setup.exe	2016-03-15 5:23	应用程序	1,543 KB

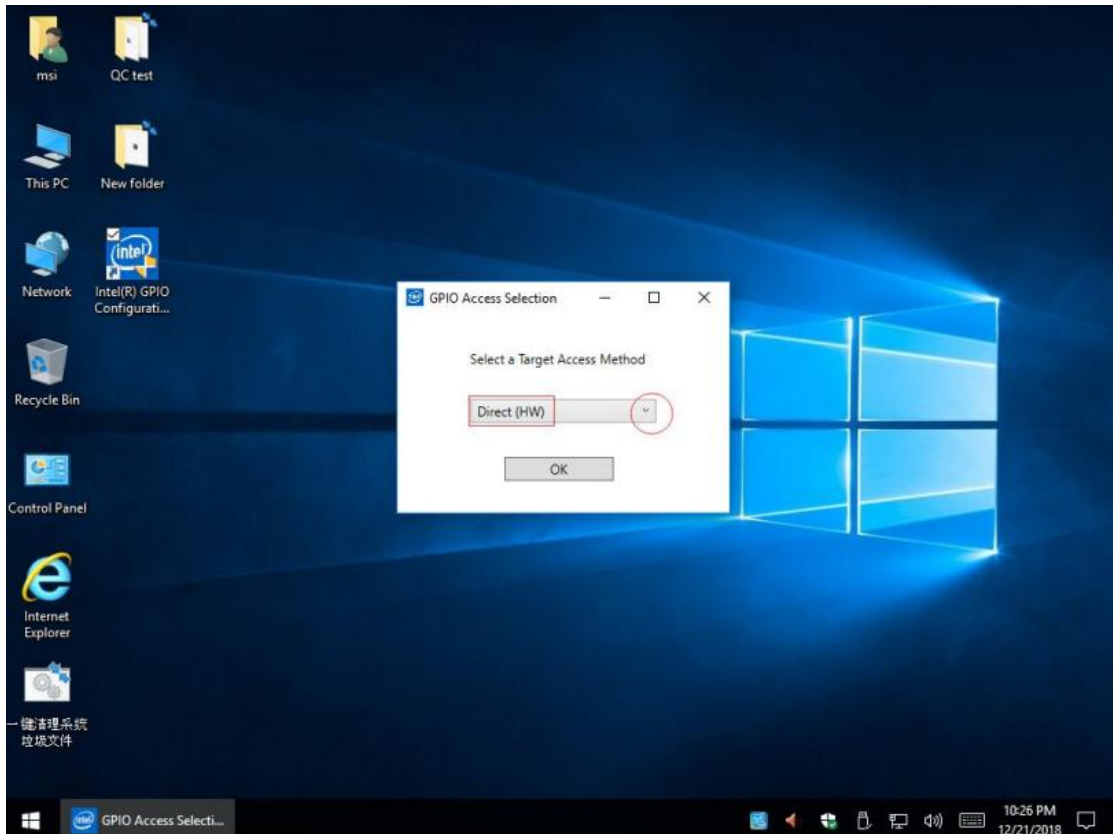


2. Test method

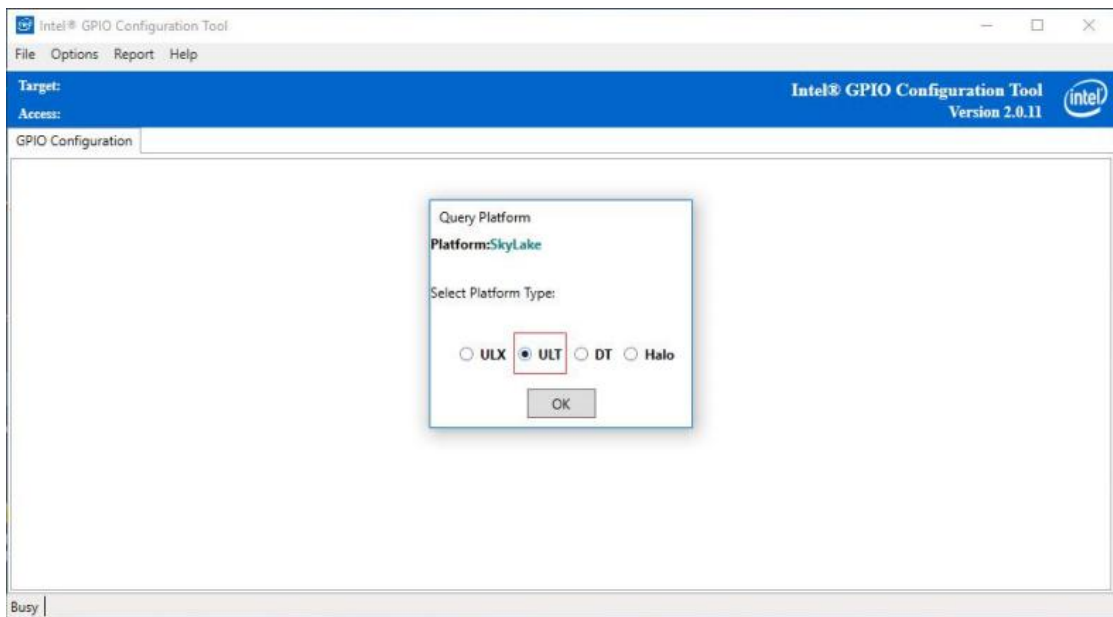
2.1 Double click Intel GPIO Configuratio;



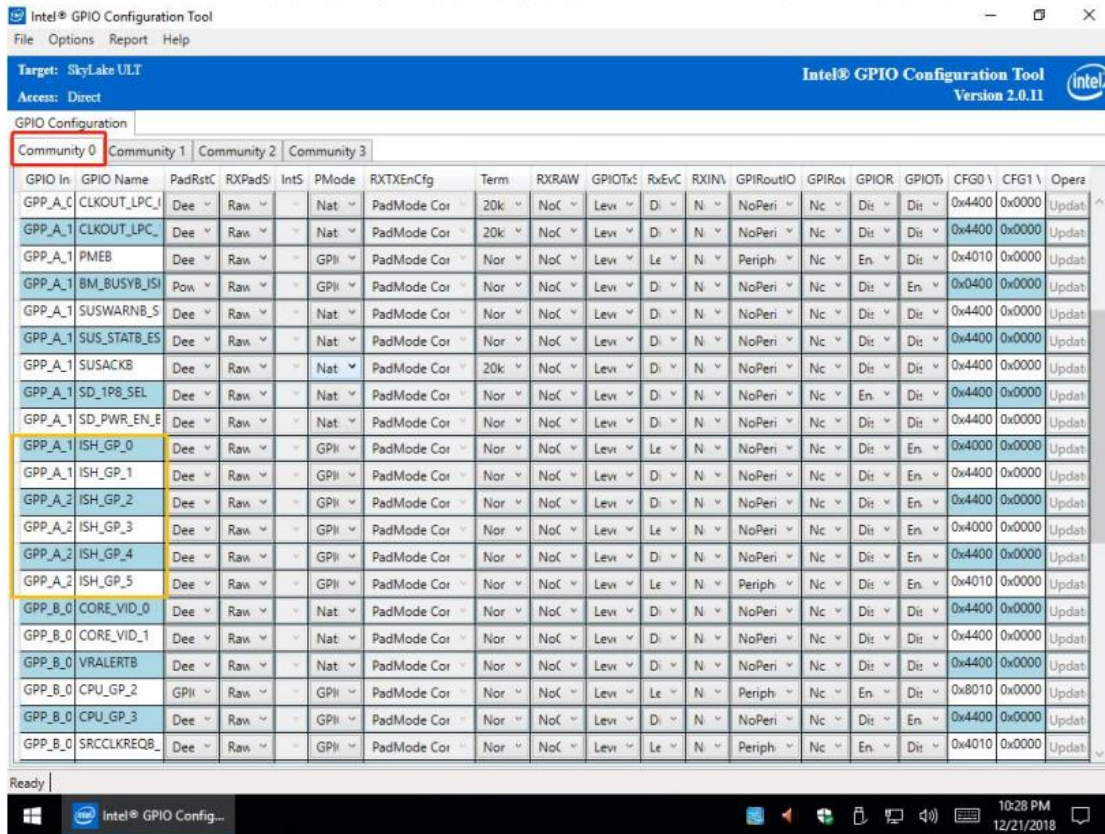
2.2 Select “Dirdirect(HW)”



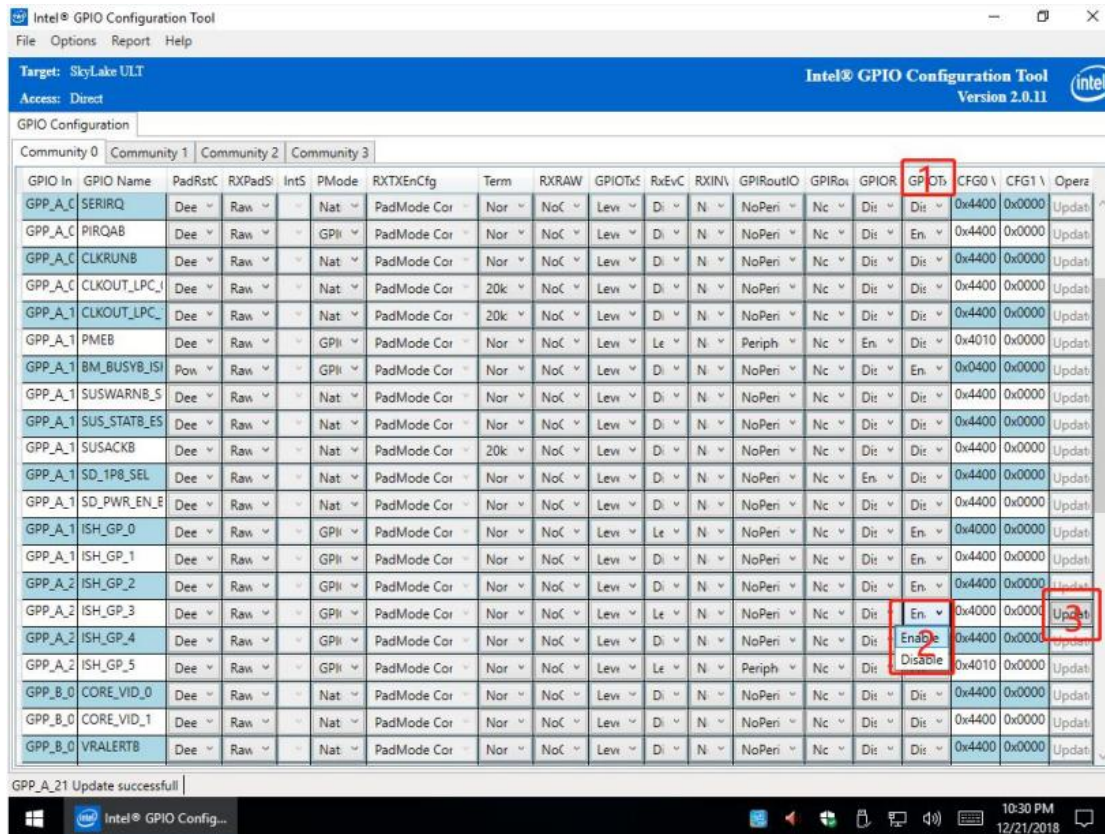
2.3 Select “ULT” ----> OK



2.4 Choose the red table, eg YS--I56200U motherboard, see below where marked yellow



2.5 Eg GP3 on rang where I marked with "1",--->"2" select enable --->"3" update to enable GP3;



2.6 on "1" Pmode range, select GPIO Mode ---> update;

Intel® GPIO Configuration Tool

Target: SkyLake ULT

Access: Direct

Intel® GPIO Configuration Tool Version 2.0.11

GPIO In	GPIO Name	PadRstC	RxPadS	IntS	Pmode	RXTXEnCfg	Term	RXRAW	GPIOTxS	RxEvC	RXIN\	GPORoutIO	GPORoi	GPOR	GPOTs	CFG0 \	CFG1 \	Oper
GPP_A_C	SERIRQ	Dee	Raw	-	Nat	PadMode Cor	Nor	NoC	Lev	D	N	NoPeri	Nc	Dis	Dis	0x4400	0x0000	Updat
GPP_A_C	PIRQAB	Dee	Raw	-	GPJ	PadMode Cor	Nor	NoC	Lev	D	N	NoPeri	Nc	Dis	En	0x4400	0x0000	Updat
GPP_A_C	CLKRUNB	Dee	Raw	-	Nat	PadMode Cor	Nor	NoC	Lev	D	N	NoPeri	Nc	Dis	Dis	0x4400	0x0000	Updat
GPP_A_C	CLKOUT_LPC_I	Dee	Raw	-	Nat	PadMode Cor	20k	NoC	Lev	D	N	NoPeri	Nc	Dis	Dis	0x4400	0x0000	Updat
GPP_A_1	CLKOUT_LPC_	Dee	Raw	-	Nat	PadMode Cor	20k	NoC	Lev	D	N	NoPeri	Nc	Dis	Dis	0x4400	0x0000	Updat
GPP_A_1	PMEB	Dee	Raw	-	GPJ	PadMode Cor	Nor	NoC	Lev	Le	N	Periph	Nc	En	Dis	0x4010	0x0000	Updat
GPP_A_1	BM_BUSYB_ISI	Pow	Raw	-	GPJ	PadMode Cor	Nor	NoC	Lev	D	N	NoPeri	Nc	Dis	En	0x0400	0x0000	Updat
GPP_A_1	SUSWARNB_S	Dee	Raw	-	Nat	PadMode Cor	Nor	NoC	Lev	D	N	NoPeri	Nc	Dis	Dis	0x4400	0x0000	Updat
GPP_A_1	SUS_STATB_ES	Dee	Raw	-	Nat	PadMode Cor	Nor	NoC	Lev	D	N	NoPeri	Nc	Dis	Dis	0x4400	0x0000	Updat
GPP_A_1	SUSACKB	Dee	Raw	-	Nat	PadMode Cor	20k	NoC	Lev	D	N	NoPeri	Nc	Dis	Dis	0x4400	0x0000	Updat
GPP_A_1	SD_IP8_SEL	Dee	Raw	-	Nat	PadMode Cor	Nor	NoC	Lev	D	N	NoPeri	Nc	En	Dis	0x4400	0x0000	Updat
GPP_A_1	SD_PWR_EN_E	Dee	Raw	-	Nat	PadMode Cor	Nor	NoC	Lev	D	N	NoPeri	Nc	Dis	Dis	0x4400	0x0000	Updat
GPP_A_1	ISH_GP_0	Dee	Raw	-	GPJ	PadMode Cor	Nor	NoC	Lev	Le	N	NoPeri	Nc	Dis	En	0x4000	0x0000	Updat
GPP_A_1	ISH_GP_1	Dee	Raw	-	GPJ	PadMode Cor	Nor	NoC	Lev	D	N	NoPeri	Nc	Dis	En	0x4400	0x0000	Updat
GPP_A_2	ISH_GP_2	Dee	Raw	-	GPJ	PadMode Cor	Nor	NoC	Lev	D	N	NoPeri	Nc	Dis	En	0x4400	0x0000	Updat
GPP_A_2	ISH_GP_3	Dee	Raw	-	GPJ	PadMode Cor	Nor	NoC	Lev	Le	N	NoPeri	Nc	Dis	En	0x4000	0x0000	Updat
GPP_A_2	ISH_GP_4	Dee	Raw	-	GPIO Mode	PadMode Cor	Nor	NoC	Lev	D	N	NoPeri	Nc	Dis	En	0x4400	0x0000	Updat
GPP_A_2	ISH_GP_5	Dee	Raw	-	Native Fn1	PadMode Cor	Nor	NoC	Lev	Le	N	Periph	Nc	Dis	En	0x4010	0x0000	Updat
GPP_B_0	CORE_VID_0	Dee	Raw	-	Native Fn2	PadMode Cor	Nor	NoC	Lev	D	N	NoPeri	Nc	Dis	Dis	0x4400	0x0000	Updat
GPP_B_0	CORE_VID_1	Dee	Raw	-	Native Fn3	PadMode Cor	Nor	NoC	Lev	D	N	NoPeri	Nc	Dis	Dis	0x4400	0x0000	Updat
GPP_B_0	VRALERTB	Dee	Raw	-	Nat	PadMode Cor	Nor	NoC	Lev	D	N	NoPeri	Nc	Dis	Dis	0x4400	0x0000	Updat

GPP_A_21 Update successful!

2.7 On "1" GPOTxS range--->select level 0/level1 --->update for high and low level switching.



GPIO Configuration

Community 0 Community 1 Community 2 Community 3

GPIO In	GPIO Name	PadRstC	RXPadS	IntS	PMode	RXTXEnCfg	Term	RXRAW	GPIOxS	RxEvC	RXIN	GPORoutIO	GPORoi	GPOR	GPOTb	CFG0	CFG1	Oper
GPP_A_C	SERIRQ	Dee	Raw		Nat	PadMode Cor	Nor	NoC	Levi	Di	N	NoPeri	Nc	Dir	Dir	0x4400	0x0000	Updat
GPP_A_C	PIRQAB	Dee	Raw		GPII	PadMode Cor	Nor	NoC	Levi	Di	N	NoPeri	Nc	Dir	En	0x4400	0x0000	Updat
GPP_A_C	CLKRUNB	Dee	Raw		Nat	PadMode Cor	Nor	NoC	Levi	Di	N	NoPeri	Nc	Dir	Dir	0x4400	0x0000	Updat
GPP_A_C	CLKOUT_LPC_I	Dee	Raw		Nat	PadMode Cor	20k	NoC	Levi	Di	N	NoPeri	Nc	Dir	Dir	0x4400	0x0000	Updat
GPP_A_C	CLKOUT_LPC_O	Dee	Raw		Nat	PadMode Cor	20k	NoC	Levi	Di	N	NoPeri	Nc	Dir	Dir	0x4400	0x0000	Updat
GPP_A_1	PMEB	Dee	Raw		GPII	PadMode Cor	Nor	NoC	Levi	Le	N	Periph	Nc	En	Dir	0x4010	0x0000	Updat
GPP_A_1	BM_BUSYB_JSI	Pow	Raw		GPII	PadMode Cor	Nor	NoC	Levi	Di	N	NoPeri	Nc	Dir	En	0x0400	0x0000	Updat
GPP_A_1	SUSWARNB_S	Dee	Raw		Nat	PadMode Cor	Nor	NoC	Levi	Di	N	NoPeri	Nc	Dir	Dir	0x4400	0x0000	Updat
GPP_A_1	SUS_STATB_ES	Dee	Raw		Nat	PadMode Cor	Nor	NoC	Levi	Di	N	NoPeri	Nc	Dir	Dir	0x4400	0x0000	Updat
GPP_A_1	SUSACKB	Dee	Raw		Nat	PadMode Cor	20k	NoC	Levi	Di	N	NoPeri	Nc	Dir	Dir	0x4400	0x0000	Updat
GPP_A_1	SD_1PB_SEL	Dee	Raw		Nat	PadMode Cor	Nor	NoC	Levi	Di	N	NoPeri	Nc	En	Dir	0x4400	0x0000	Updat
GPP_A_1	SD_PWR_EN_E	Dee	Raw		Nat	PadMode Cor	Nor	NoC	Levi	Di	N	NoPeri	Nc	Dir	Dir	0x4400	0x0000	Updat
GPP_A_1	ISH_GP_0	Dee	Raw		GPII	PadMode Cor	Nor	NoC	Levi	Le	N	NoPeri	Nc	Dir	En	0x4000	0x0000	Updat
GPP_A_1	ISH_GP_1	Dee	Raw		GPII	PadMode Cor	Nor	NoC	Levi	Di	N	NoPeri	Nc	Dir	En	0x4400	0x0000	Updat
GPP_A_2	ISH_GP_2	Dee	Raw		GPII	PadMode Cor	Nor	NoC	Levi	Di	N	NoPeri	Nc	Dir	En	0x4400	0x0000	Updat
GPP_A_2	ISH_GP_3	Dee	Raw		GPII	PadMode Cor	Nor	NoC	Levi	Le	N	NoPeri	Nc	Dir	En	0x4000	0x0000	Updat
GPP_A_2	ISH_GP_4	Dee	Raw		GPII	PadMode Cor	Nor	NoC	Levi	Di	N	NoPeri	Nc	Dir	En	0x4400	0x0000	Updat
GPP_A_2	ISH_GP_5	Dee	Raw		GPII	PadMode Cor	Nor	NoC	Levi	Le	N	Periph	Nc	Dir	En	0x4010	0x0000	Updat
GPP_B_0	CORE_VID_0	Dee	Raw		Nat	PadMode Cor	Nor	NoC	Levi	Di	N	NoPeri	Nc	Dir	Dir	0x4400	0x0000	Updat
GPP_B_0	CORE_VID_1	Dee	Raw		Nat	PadMode Cor	Nor	NoC	Levi	Di	N	NoPeri	Nc	Dir	Dir	0x4400	0x0000	Updat
GPP_B_0	VRALERTB	Dee	Raw		Nat	PadMode Cor	Nor	NoC	Levi	Di	N	NoPeri	Nc	Dir	Dir	0x4400	0x0000	Updat

GPP_A_21 Update successful